

Pan's Lullaby

~ from the movie Pan's Labyrinth ~

Arranged by Twan Cox



OOR CREATIE

Compositions & Sheet music

Score

Pan's Lullaby

Javier Navarrete

Arr.: T. Cox

♩ = 84

Solo Alto

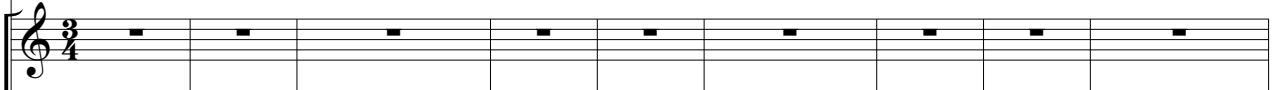


mf
Mm-m - m - m - m - m - mm - mm.

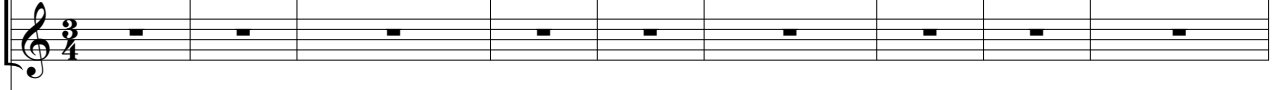
Choir



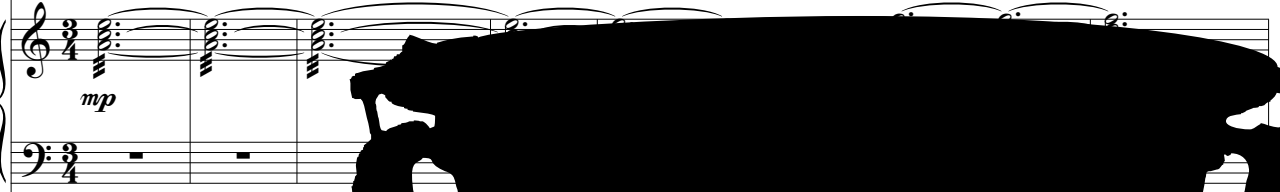
Glockenspiel +
Wind Chimes



Vibraphone

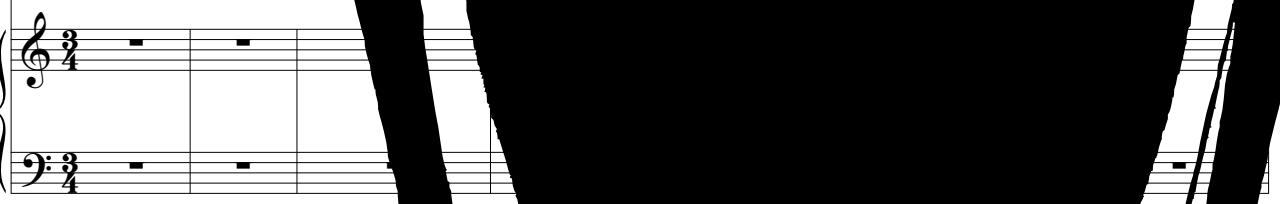


Marimba



mp

Bass Marimba



Solo A



C



Glk. +
W. Ch.

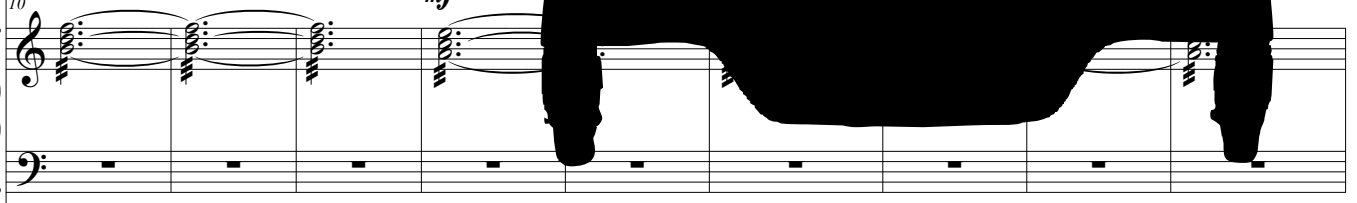


Vib.

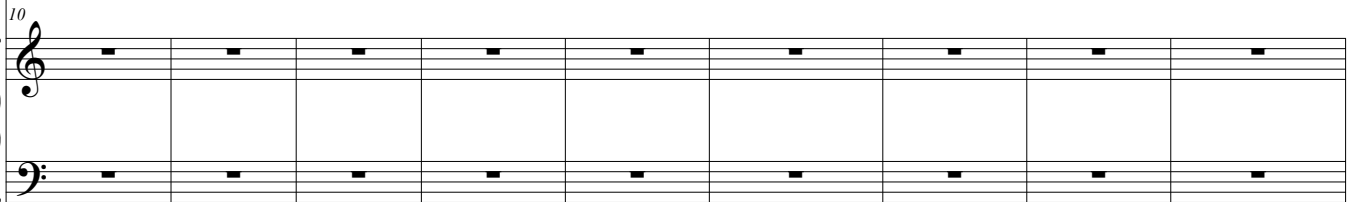


mf

Mrb.



B. Mba.



2
19

Solo A

C

19

Glk. +
W. Ch.

Vib.

19

Mrb.

B. Mba.

19

This block contains the musical score for measures 19 through 27. The score is arranged in a system with five staves: Solo A (top), C, Glk. + W. Ch., Vib., and Mrb. (middle), and B. Mba. (bottom). A large, solid black cloud graphic is superimposed over the center of the page, partially obscuring the musical notation in the Solo A, C, Glk. + W. Ch., and Vib. staves. The Mrb. and B. Mba. staves are visible through the cloud. The Solo A staff shows a melodic line starting with a half note, followed by quarter notes and eighth notes. The C staff has a whole note chord. The Glk. + W. Ch. staff has a whole note chord. The Vib. staff has a melodic line with eighth notes and quarter notes. The Mrb. staff has a complex texture with many notes and slurs. The B. Mba. staff has a whole note chord.

28

Solo A

C

28

Glk. +
W. Ch.

Vib.

28

Mrb.

B. Mba.

28

Oooh
mf

This block contains the musical score for measures 28 through 35. The score is arranged in a system with five staves: Solo A (top), C, Glk. + W. Ch., Vib., and Mrb. (middle), and B. Mba. (bottom). The Solo A staff shows a melodic line with quarter notes and eighth notes. The C staff has a whole note chord. The Glk. + W. Ch. staff has a whole note chord. The Vib. staff has a melodic line with eighth notes and quarter notes. The Mrb. staff has a complex texture with many notes and slurs. The B. Mba. staff has a whole note chord. The Solo A staff has a vocal line with the word "Oooh" and a dynamic marking of *mf*.

36

Solo A

C

f

Glk. + W. Ch.

Vib.

36

Mrb.

mf

ff

B. Mba.

f

46

Solo A

C

Glk. + W. Ch.

Vib.

46

Mrb.

B. Mba.



4
54

Solo A

C

54

Glk. +
W. Ch.

Vib.

54

Mrb.

54

B. Mba.

Wind Chimes

mp

mf

The image features a large, black silhouette of a person with a circular head and three legs, positioned centrally over a musical score. The score is written for a variety of instruments: Solo A (flute), C (clarinet), Glk. + W. Ch. (glockenspiel and wind chimes), Vib. (vibraphone), Mrb. (maracas), and B. Mba. (bongos). The score is in 4/4 time and starts at measure 54. The wind chimes part is marked *mp* and the maracas part is marked *mf*. The silhouette is a simple, stylized figure with a large circular head and three thick, slightly curved legs extending downwards.